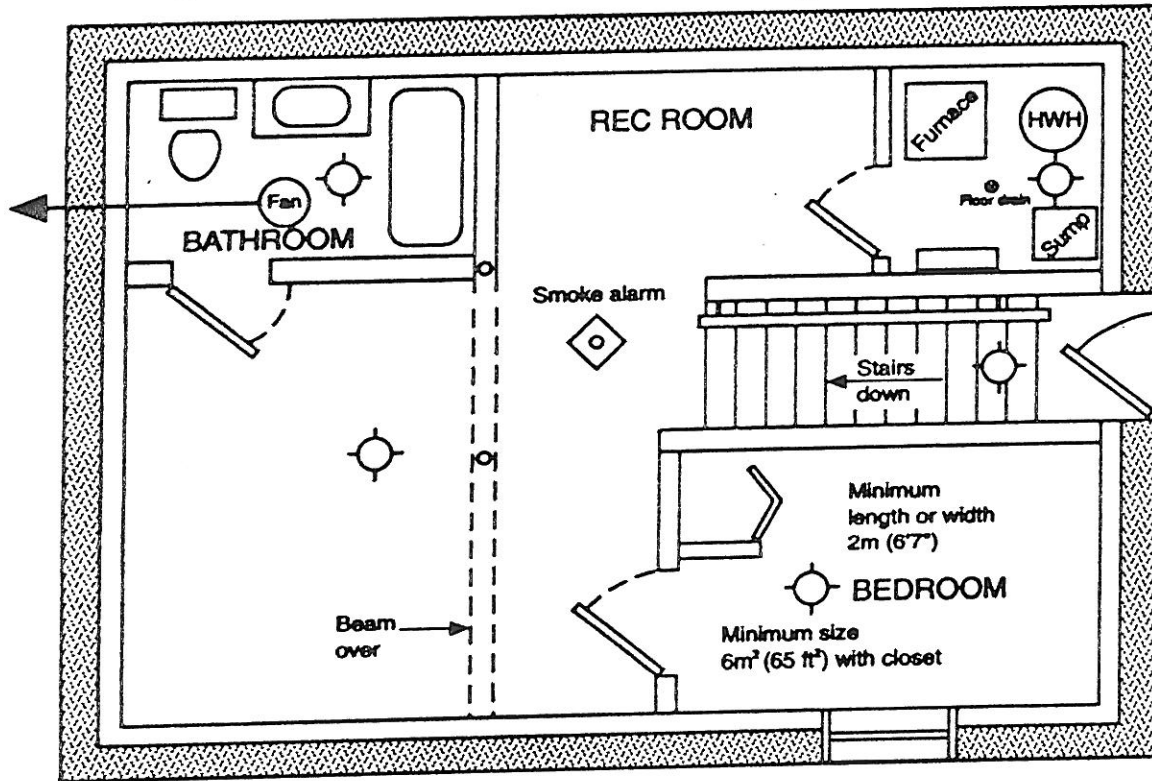


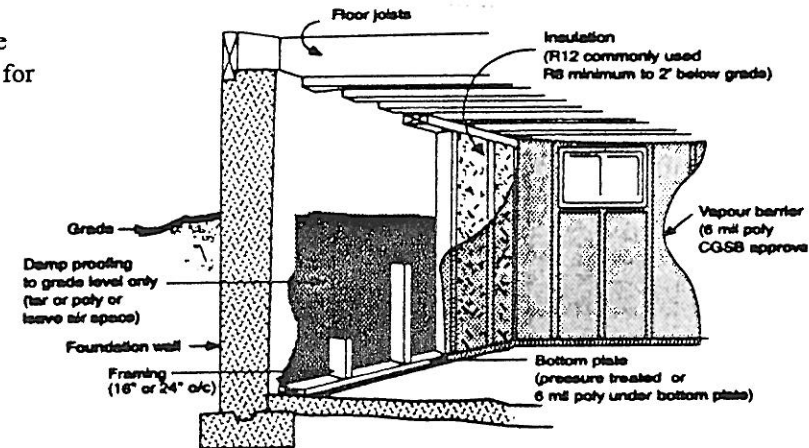
Sample Plan

We examine room sizes and uses, window sizes and ceiling heights.

- Furnace in a separate room from living space
- Follow manufacturer's minimum clearances for furnace, plenum and flue



Typical Framing



The minimum size for a door in the following rooms is:

- Furnace room 810mm x 1980mm or (32" x 78")
- Bathroom 610mm x 1980mm or (24" x 78")
- Bedroom 760mm x 1980mm or (30" x 78")

Windows

Bedroom windows must open for ventilation, natural light and emergency exiting. The window size must be 5% of the room area (less closet) but never smaller than 0.35m² (3.77 sq. ft.) in area with no dimension less than 380mm (15"). Also 550mm (22") minimum clearance is required in front of a window well.

Bathrooms must have either a window that opens or an exhaust fan vented to the exterior to remove odours and condensation.

Any structural changes, like moving a post or beam will require detailed drawings and in some cases, the services of a professional engineer.

Minimum Ceiling Heights

